

Work with us via the MDC1 Framework



We're on to the MDC1 Framework

We're delighted that ADP has been appointed to the LHC and CPC Multi-Disciplinary Consultancy Services Framework (MDC1) to build and refurbish education, healthcare and community buildings for the public sector.

At ADP, we work as one architectural practice. Our projects are delivered locally, by regional teams managed by studio directors in each location. These teams are guided, challenged and supported by sector directors, who specialise in all the key building types likely to be procured under the framework.

We would be very happy to discuss your requirements and our approach to social value and how it can benefit your projects.

To find out more please contact:



Adrian Bower

ADP Residential Sector Director /
MDC1 Framework Director
E: Adrian.bower@adp-architecture.com



Helen O'Curry

ADP Director / CPC Regional Director
E: Helen.ocurry@adp-architecture.com



Wayne Dobbins

ADP Director / LHC Regional Director
E: Wayne.dobbins@adp-architecture.com

ADP leads a strong multi-disciplinary team

As the lead architect we have assembled the following skilled multi-disciplinary team covering all the required services, which provides excellent national coverage:

Corde (Structural and Civils)

Corde is ADP's joint venture with AKS Ward - structural engineering, and KJ Tait - building services. By sharing our knowledge and skills, we can design and deliver a new standard of buildings – without compromise.

AA Projects (Building Surveyor)

Construction consultancy specialising in the maintenance and care of buildings and offer solutions specifically tailored to individual client requirements.

EDGE (QS, Employers Agent, PM)

A multi-disciplinary property and construction consultancy who provide a variety of services to national and international clients across all property sectors.

Barton Willmore now Stantec (Planning)

A leading planning, regeneration and design consultancy. From 13 offices nationwide our 300+ planners and designers combine national influence with local knowledge to offer you the very best advice.

Gauge - Tupper (Clerk of Works)

30+ years focused on exceptional Clerk of Works services, nationwide. A truly professional interdisciplinary surveying and construction service across all sectors.

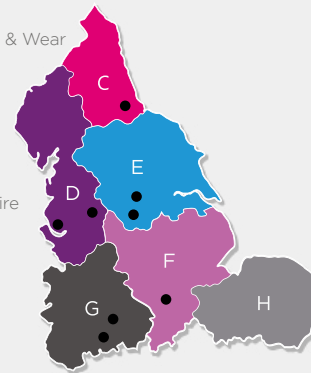
We have all the MDC1 regions covered:



[Click for more info](#)

Regional areas covered:

- C - North East**
Tees Valley & Durham, Northumberland & Tyne & Wear
- D - North West**
Cumbria, Greater Manchester
Lancashire, Cheshire, Merseyside
- E - Yorkshire and the Humber**
East Yorkshire & Northern Lincolnshire
North Yorkshire, South Yorkshire, West Yorkshire
- F - East Midland**
Derbyshire & Nottinghamshire, Lincolnshire
- G - West Midland**
Herefordshire, Worcestershire & Warwickshire,
Shropshire & Staffordshire, West Midlands
- H - East of England**
East Anglia, Leicestershire, Rutland & Northamptonshire



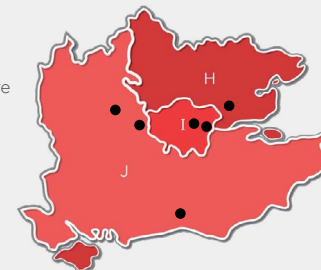
- **Our CPC region office locations:** Pershore, Birmingham, Sheffield, Nottingham, Manchester, Leeds, Liverpool, Newcastle.



[Click for more info](#)

Regional areas covered:

- I - London**
- J - South East England**
Berkshire, Buckinghamshire and Oxfordshire
Surrey East & West Sussex
Hampshire & Isle of Wight
Kent
- H - East of England**
Bedfordshire & Hertfordshire
Essex



- **Our LHC region office locations:** London, Oxford, Reading, Cambridge, Southampton, Ebbsfleet.

A multi-disciplinary team with added value benefits

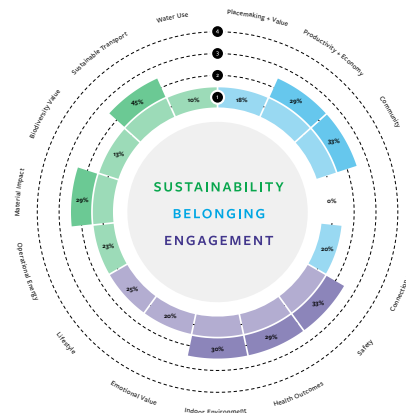


Social Value Matters

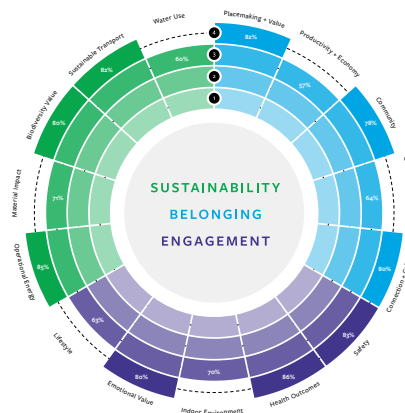
As a practice, we're redefining good architecture by measuring success in terms of **sustainability**, **belonging** and **engagement**. Sustainability is our starting point: designing for the long-term benefit of the people and environments impacted by a space. We create places with a true sense of belonging for the people who will use them; giving opportunities to connect meaningfully with the place and with others who share it.

To evidence this social value - and social return on investment - our projects deliver, we've created a bespoke Sustainability Belonging and Engagement (SBE) Assessment tool, illustrated below.

This tool helps the team to plan and measure the social and environmental impact of projects. Appropriate project targets are identified in each of three key areas: sustainability, belonging and engagement. Success is measured through a series of checklists that align with the RIBA 2020 Plan of Work, the RIBA 2030 Climate Challenge and newly released RIBA Social Value Toolkit. By agreeing at the outset what we will measure and when we will measure it - we can chart our progress against these three criteria. This enables us to focus on, and value, what matters most: a key principle of social value, and critically important to ensuring accountability.



24% before



75% after

Example SBE toolkit diagrams (before and after) illustrating graphically the positive environmental and social impact our designs have had on a project

SUSTAINABILITY

It's our starting point in everything we do
Addressing real world changes
Thinking long term

ENGAGEMENT

Creating a true sense of place
For people and communities
Forming connections with nature

BELONGING

Enhancing the everyday
Places for people to enjoy
Connecting meaningfully to enhance creativity and optimism



Social Return on Investment (SROI)

SROI is a method of measuring social value that uses a financial proxy system. This means that social benefits - a happier stakeholder, a healthier employee - are converted to a currency figure, which we can then use to estimate a return on investment.

We employ an accredited SROI practitioner, and would be happy to work with you using this methodology to engage with stakeholders throughout the life of a project.

Effective SROI reports can:

- + Provide a detailed analysis of a project's benefits to stakeholders
- + Allow comparison of social and financial value and benefits
- + Identify a project's unexpected or unintended effects
- + Engage stakeholders with social value in design
- + Provide robust evidence for future design or investment decisions